



Learning Disability England

Representative Body Role Description



This information is about becoming a member of Learning Disability England's Representative Body.

What does a member of Learning Disability England's Representative Body do?



The members of the Representative Body steer Learning Disability England by making important decisions about what we say and do.



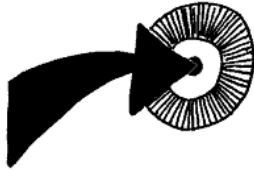
They represent LDE members and act on their behalf.



The members of the Representative Body work together as a team to make the best decisions for Learning Disability England.

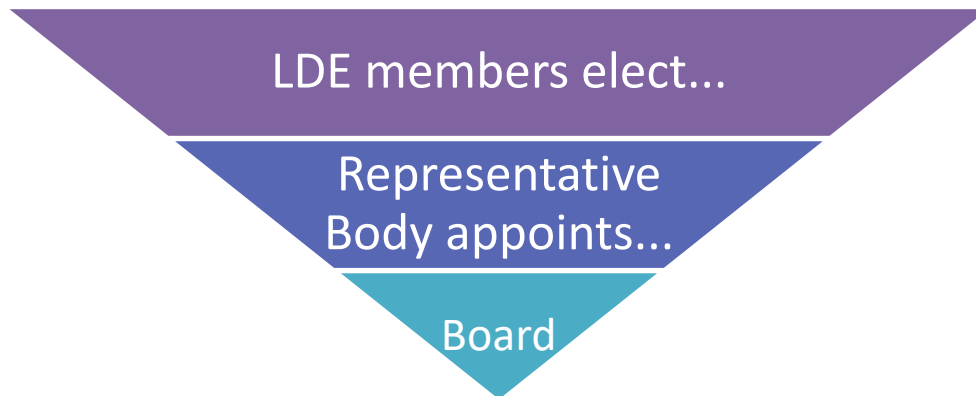


Learning Disability England



They make sure Learning Disability England stays true to our values and is always working towards our goals.

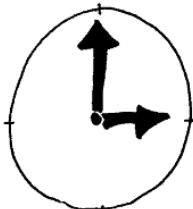
The members of the Representative Body appoint (choose) LDE's trustee board.



We think that being a member of the Representative Body will be about 11 hours of work every 3 months.

That will be:

- A 4-hour meeting every 3 months
- 4 hours to read papers and get ready for the meetings
- 1 hour a month of emails or phone calls outside of meetings.



It might involve more work than this, for example if you go to an event to represent LDE.



Learning Disability England



The role is unpaid but we will pay for you to get to meetings.

To be a member of the Representative Body you must...



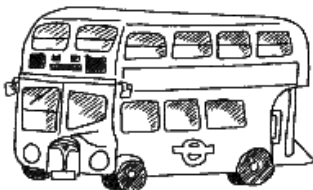
- Be a member of Learning Disability England.



- Agree to work together with self-advocates, families, friends and allies, organizations and LDE staff.



- Be able to attend 4 meetings a year and come to the meetings prepared.



- Be able to travel to meetings, with support if necessary.



Learning Disability England



- Be able to stay on the Representative Body for 3 years.
- Be able to find out what other people think

To be on the Representative Body you must also share Learning Disability England's values. These are the things that are important to us:



People with learning disabilities first—in everything we do and how we are run.



Be challenging—when it comes to what people with learning disabilities and families want, need and have a right to.



Work together—to achieve better lives for people with learning disabilities.



Learning Disability England



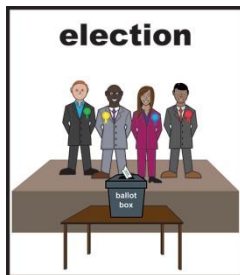
Be empowering—by making sure our members have power and can act on behalf of LDE with confidence and clarity.



Be creative and try new things—by thinking differently about how we can solve problems and not being afraid to get it wrong sometimes.

If you are elected and you behave in a way that shows you don't agree with our values, we may need to ask you to stop being on the Representative Body.

How to become a member of the Representative Body



We will be holding elections. That means that people will have to vote for you.



You will have to write a very short manifesto. A manifesto is a bit of writing that tells people who you are and why you think they should vote for you.



Learning Disability England



You will also be asked to record a short video, but we can help you with this.



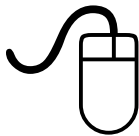
All LDE members can stand in the election. We will be asking who wants to stand on 30th May.

You have from 30th May until 23rd June to tell us you want to stand for election.



If you have any questions, contact LDE.

You can call us on 0300 201 0455



Or you can email us at elections@LDEngland.org.uk