



Learning Disability England

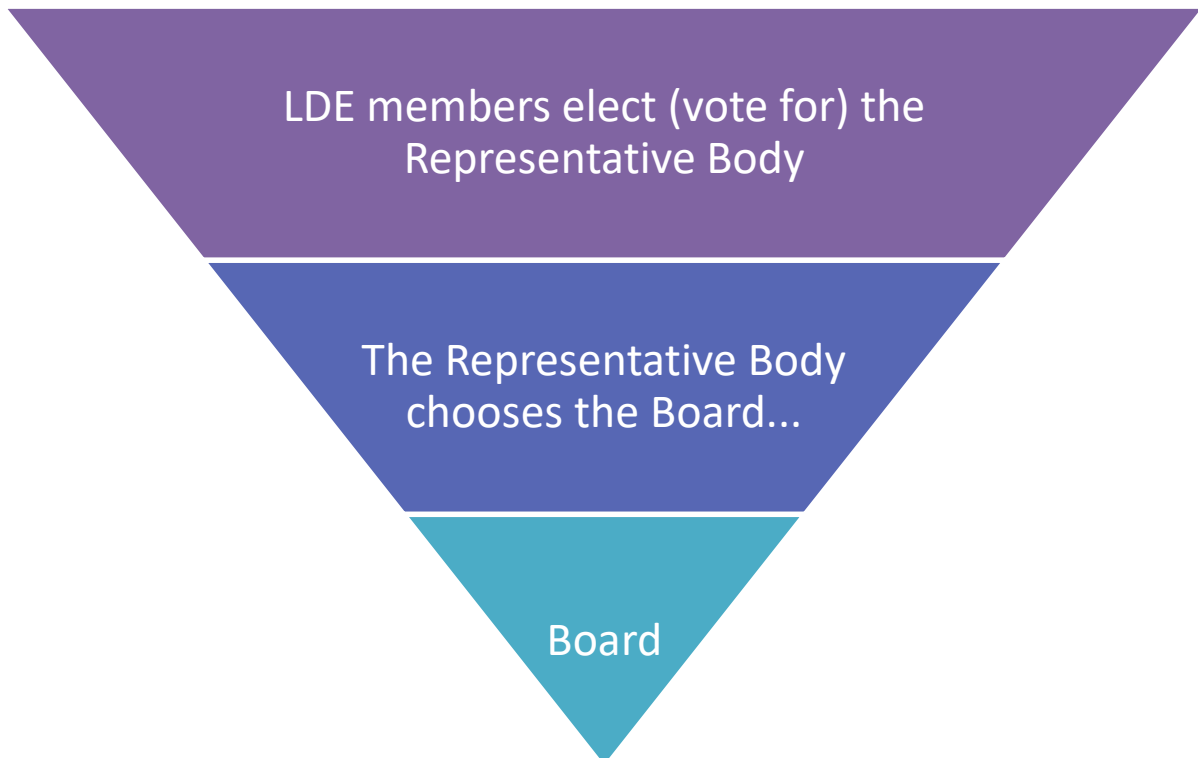
## Electing the Representative Body



This information sheet is about the elections for Learning Disability England's Representative Body.

### What are we voting for?

In most charities, it is the Board of Trustees that is at the top of the organisation and has all the power. Learning Disability England looks very different...



In Learning Disability England, it is the members who have power.



Learning Disability England



The Representative Body will make the important decisions about what LDE does.

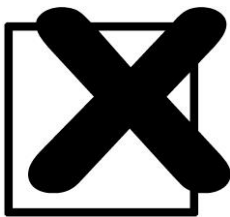
Usually in charities this is done by an unelected Board but in LDE the power lies with the members and the people they elect to the Representative Body.



The members of the Representative Body steer LDE by making important decisions about what we say and do.

The Representative Body is made up of:

- 4 people with learning disabilities
- 4 family members and friends
- 4 people from organisations
- 3 LDE staff
- A Board member



The Representative Body are chosen by a vote. People with learning disabilities vote for their representatives, families vote for their representatives, and organisations vote for their representatives.



The Representative Body represents LDE's members and tries to do what most members want.



Learning Disability England



The members of the Representative Body work together as a team.



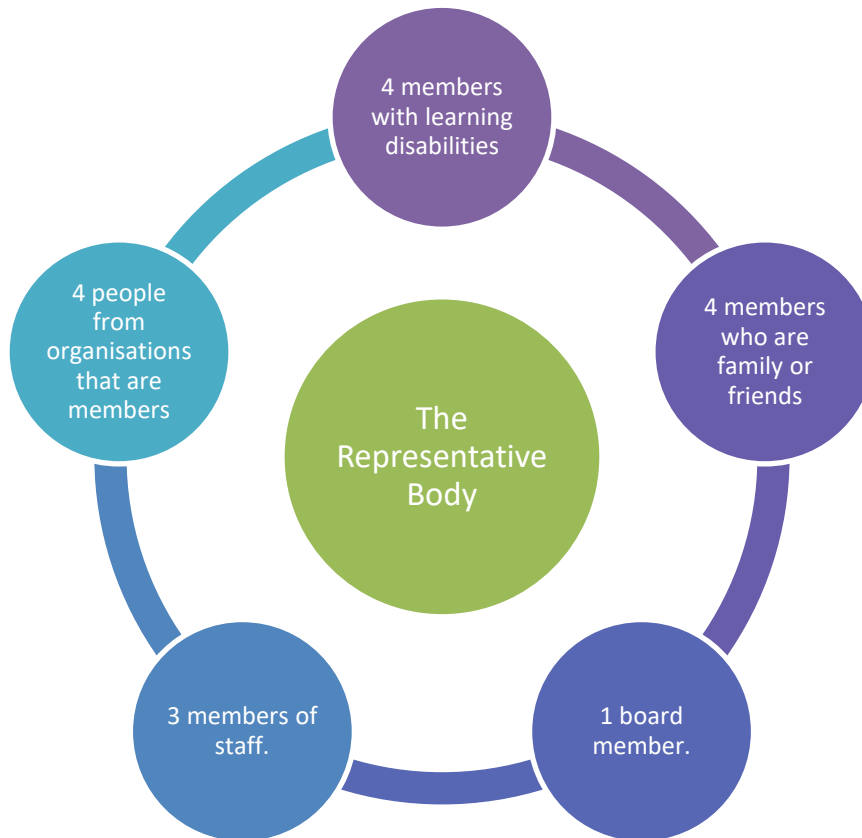
They make sure LDE stays true to our values and is always working towards our goals.

They are not responsible for the day-to-day running of LDE.



The Representative Body chooses LDE's Board

The Representative Body will look like this:



The three staff members will be:

- A member of staff who is a self-advocate.
- A member of staff who is a family member or a friend
- A member of staff who works with our member organisations.

## Who can be on the Representative Body?



To be a member of the Representative Body you must...

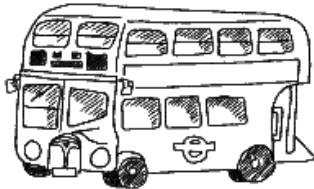
- Be a member of Learning Disability England.



- Agree to work together with self-advocates, families, friends, organizations and LDE staff.



- Be able to attend 4 meetings a year and come to the meetings prepared.



- Be able to travel to meetings, with support if necessary.



- Be able to stay on the Representative Body for 3 years.

- Be able to find out what other people think



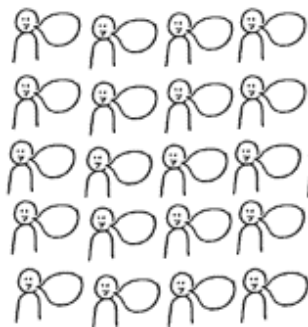
Learning Disability England

## Who can vote?



Only members can vote.

Each member has one vote.



LDE gives everyone an equal say.

All organisations and groups have 1 vote each, whether they are a big organisation or a self-advocacy group.

An individual member also has 1 vote.

## How to vote

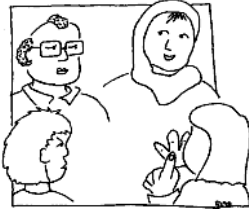


You will be able to vote in whatever way is best for you. That might be:

- Online
- On the phone
- By filling in a form that we send you and returning it by post.



Learning Disability England



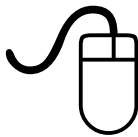
Self-advocacy groups, carer groups and organisations decide amongst themselves who they are going to vote for and then they tell LDE by phone or by email.

### Any questions?



If you have any questions, contact LDE.

You can call us on 0300 201 0455



Or you can email us at [elections@LDEngland.org.uk](mailto:elections@LDEngland.org.uk)