

Learning Disability England


Trustees recruitment pack 2024



This pack is for anyone interested in being a Learning Disability England Trustee.

There is information about

- How Learning Disability England works
- Being a Trustee
- How to apply
- The Big Plan for making a difference



Please get in touch by 15th July at 12pm

About Learning Disability England



Learning Disability England exists to make life better for and with people with Learning Disabilities and their families.

Learning Disability England is bringing people and organisations together to create a movement for change where people with learning disabilities, families, friends and paid supporters come together on an equal basis.



Learning Disability England is the member-led national organisation. Membership is organised into 3 groups of different experiences or voice groups



People with learning disabilities and Self-advocacy organisations;

Family and friends and family carer organisations

Paid supporters and partners (including people and organisations working in social care, health, universities, policy or training)

What this is about

Learning Disability England is looking for new Trustees



Learning Disability England is looking for new Trustees to help run and guide the charity

Like all charities Learning Disability England has legal rules that say how we must work as a charity.

Our rules say that the Representative Body will lead on choosing new Trustees



This information pack tells you about being a Trustee of Learning Disability England and our plan for how we get new Trustees.

We hope you will get involved

Kumudu, Liz and Ivan on behalf of
The Members Representative Body



The Representative Body are people elected by the members.

They choose who will be the Trustees

They work with the Trustees to guide, check and support our work.

The Representative Body decides what Learning Disability England should work on and checks what members think.

The Representative Body are 1 way Learning Disability England is led by members



How we work

Learning Disability England:

- **Supports** others work;
- **Celebrates** others action or achievements
- **Leads** when taking action together is best.



We do this through

Membership – for people and organisations creating stronger links together

Influence and campaigning – speaking up and sharing others important work

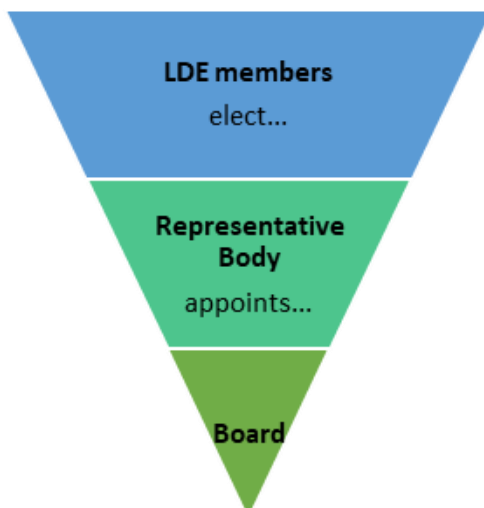
Solving problems together & sharing what works

Share information and build networks so we learn together



Learning Disability England works to be led by Members

We do this by having a **Representative Body**



The Representative Body are people elected by the members.

They choose who will be the Trustees

They work with the Trustees to guide, check and support our work.

The Representative Body decides what Learning Disability England should work on and checks what members think.

Being a Trustee at Learning Disability England

Learning Disability England can have between 6 and 8 Trustees.

Read about the current Trustees [here](#)

We are looking for up to 2 new Trustees to join the Board over the next year.

The Trustees job is set by the law and Learning Disability England's own rules.

The Trustees are volunteers and do not get paid for being a Trustee. They can get paid their expenses for when they are doing work for learning Disability England.

The Trustees have to be able to come to 4 meetings a year and they can get involved in other work with LDE in between.

The Trustees meet in person 1 or 2 times a year. Also Trustees usually come to the conference held in February or March

The Trustees are the people who have the responsibility for the charity overall.

You can find out more about the general rules for Trustees in this guide from the Charity Commission

[The essential trustee: what you need to know, what you need to do - GOV.UK \(www.gov.uk\)](http://www.gov.uk)

NCVO made an easy read guide [here](#)



Being a Trustee at Learning Disability England

Trustees main jobs are to:



- Make sure Learning Disability England does the things it was set up to do and is following its own rules about working with members and other people



- Check LDE spends its money well and keeps the right accounts
- Make sure that LDE works within the money it has available and changes its work if there is not enough money for the original plans



- Make sure Learning Disability England has the right insurances
- Make sure the right reports are sent to Companies House and the Charity Commission



- Be part of telling people about what Learning Disability England does and listen to ideas from other people



The Trustees also make sure LDE keeps to the law around things like:

- o Employing people
- o Health and Safety
- o Equal opportunities

Being a Trustee at Learning Disability England



The Trustees choose and support the Chief Executive or lead staff

They also have the job of making sure it is clear how the Trustees, Representative Body and staff work together.



The Trustees elect people to be Co Chairs or the Chair of Trustees and Vice Chair of the Board of Trustees.

The law and our legal rules set out the important things the Trustees need to think about or how they need to act in doing their job.



These include:

1. The Trustees working in partnership with Representative Body members, being open to sharing power to run Learning Disability England.



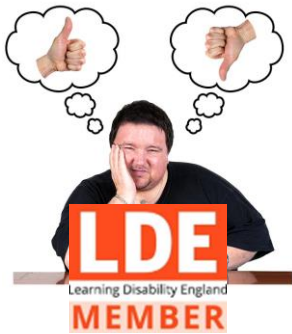
2. Be honest and open about the other things they are involved in. This is so that other Trustees can see whether they might find it difficult to make a decision in LDE's best interests. This is called a conflict of interest



How the Trustees need to work

The law and our legal rules also include

4. Trustees act and make decisions together
5. Ask for help and advice when they do not know enough to make a decision
- 6 Not make money from being a Trustee
7. They must use their skills to act and make decisions carefully and thoughtfully. This is sometimes called a duty of care
8. Trustees should make decisions in the best interests of the charity and the people we are here to work with
9. Trustees must make sure LDE is working to keep vulnerable people it works with and its own staff are safe. They are responsible for safeguarding overall.



Trustees have to be members of Learning Disability England.

Trustees must be over 18 years old



They must be people who have not been made bankrupt or committed a crime that stops them being a Trustee or working for a charity. These rules are there to make sure that charities are run by people who the public can have confidence in.



Before people become a Trustee, Learning Disability England will need to check these rules with them.

What we think is important for the new Trustees at Learning Disability England



The current Trustees have great skills and work hard to support Learning Disability England. They know there are gaps in what their experience though.

We have looked at what new skills and experience would make Learning Disability England stronger



Learning Disability England wants more people to join as members and to grow the influence of members so people with learning disabilities live Good Lives.

That includes all parts of life like influencing transport, finance, leisure. Community life as well as government policy – all parts of life.



We would really like the 2 new Trustees who bring different skills and experiences to help LDE's work include more people and influence all parts

This includes people with experience of

- making change happen in different paid or unpaid jobs
- Marketing or communications
- Policy development



It is important to us that the Board includes people from Black Asian and minoritized groups and people with learning disabilities and family members. We welcome applications from people with that lived experience

We expect all Trustees agree to and support

- Learning Disability England's aims and values
- Working in partnership to make decisions in partnership with the Representative Body who represent our members

How to apply



We would really love to hear from anyone who is interested in being part of making Learning Disability England stronger

We are asking everyone to answer some simple questions about themselves.

You can find the questions and a link to the form on the next page

If you have any questions you can contact Sam Clark, the Chief Executive her details are at the end of this pack

The important dates for this are:



Please send us your answers on the short form or film by 15th July



We will meet some people on line to talk about why they want to a Trustee.



The Co Chairs will meet people we recommend so you can ask each other questions and check it is OK.



We hope the new Trustees will be able to join the meeting in January 2025 as a visitor before formally becoming a Trustee after that

How to apply

Please fill in this form on line

<https://www.surveymonkey.com/r/LDE24>

You can get help to do that or send us your answers on a film or audio recording or write down your answers if that is easier for you. If you want to send them another way let Sam know

The information we are asking are below to help you think about them in advance

The paper form is here

<https://www.learningdisabilityengland.org.uk/wp-content/uploads/2024/05/Trustee-Expression-of-Interest-form.docx>

The questions we ask on the form are:

Your name

Address

E mail address

Phone number

1. Why are you interested in being a Trustee at Learning Disability England?

2. What skills or experience do you think you would bring as a Trustee to help our work for Good Lives?

3. How do you think you will need to work as a Trustee to work in partnership with the Representative Body?

4. What can LDE do to support you as a Trustee?

We will only use the information you send us as part of deciding who becomes a Trustee. We will keep it securely and only the staff or Representative Body members involved in this recruitment will see your information.





Learning Disability England

Some examples of what we are working on



Action towards Good Lives

Learning Disability England believes that people and organisations are stronger Working Together.

Since 2020 members have been working together for change so all people with learning disabilities live Good Lives.

You can read about that [here](#)

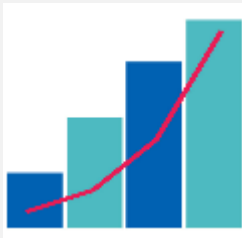
For the General Election members worked together to make a [Good Lives manifesto](#)



Membership

In March 2024 there are 683 members
That is

- 178 groups or organizations
- 505 individual members



This is 30% more members since Learning Disability started in 2016

We want more people and organisations to join

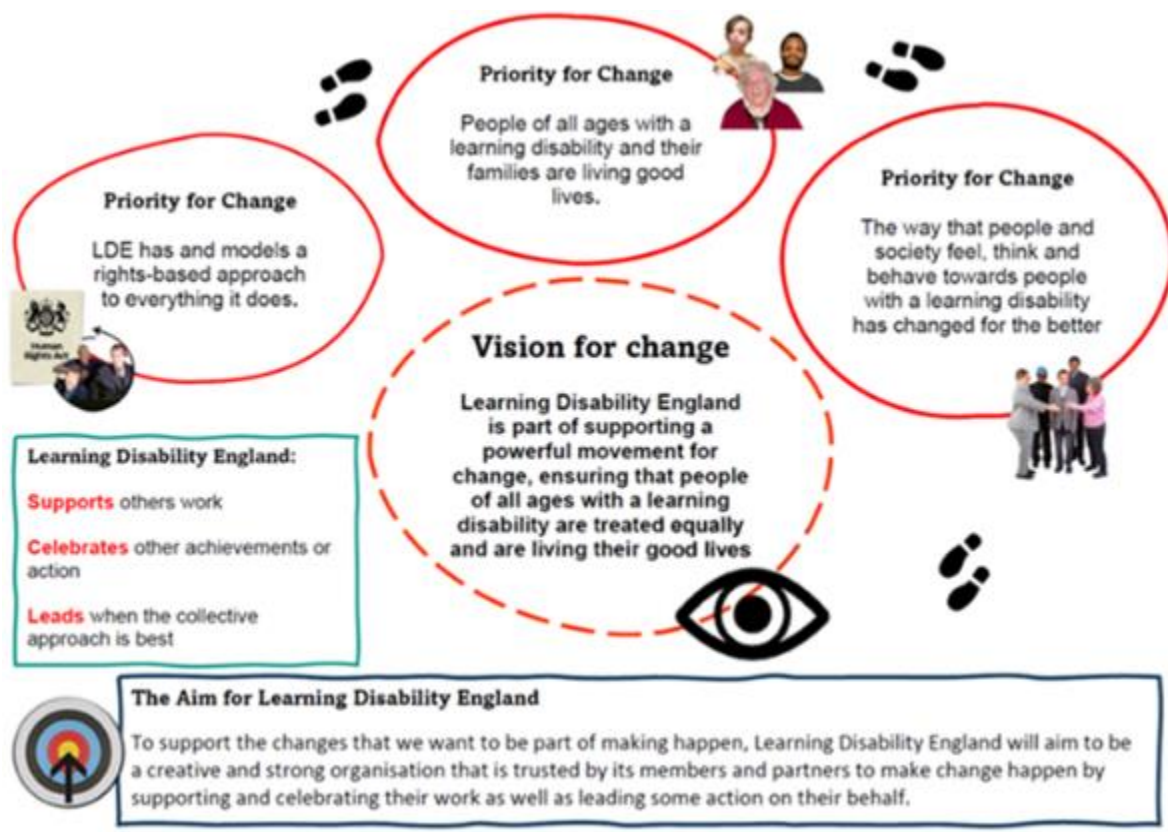


Including Everyone

People with learning disabilities from Black Asian and minorized communities and people with profound and multiple learning disabilities are often not included in policy and projects nationally.

Learning Disability England wants to be better at Including Everyone and is working to make the organization better as well as help members and partners change.

Learning Disability England Big Plan 2024 – 2029



This plan says what Learning Disability England will do to make a difference. Learning Disability England Representative Body and Trustees have made this plan. They will check if the work is happening in the plan

The difference we want to make



Our Vision for the future is:
Learning Disability England is supporting a powerful movement for change, making sure that people of all ages with a learning disability are treated equally and are living their good lives.

There are 3 big priorities Learning Disability England will work on towards the Vision for the Future:



Rights based approaches are well used
Learning Disability England has and models a rights-based approach in all it does.



People with learning disabilities of all ages and their families are living Good Lives.



The way that people and society think and feel about people with a learning disability has changed for the better.



To support this vision, Learning Disability England will aim to be a creative and strong organisation that is trusted by its members and partners to make change happen by supporting and celebrating their work as well as leading some action on their behalf.



What we will do to make a difference

Learning Disability England has made this plan to focus our work



The ideas in the plan came from

- What members said matters to them
- What the Representative Body and Trustees think is most important for LDE to work on
- What LDE has learnt about how we work and what fits with members or partners work



What we will work on 1st

This plan is the work we will do to help make the changes in the vision for the future.

There are a lot of actions and ideas.

We will start with some of the actions and focus on them

How we will check if we are making a difference

For each action we take we will say what we can do to check if we are making a difference.

The Representative Body and Trustees will check what difference we are making on the targets each year. .



Find out more



If you want to get in touch about being a Trustee or any of Learning Disability England's work you can do that in a few different ways

Look on the Website:
<https://www.learningdisabilityengland.org.uk/>

Follow us on X: @learningDisEng
Facebook:
<https://www.facebook.com/learningdisabilityengland/>

Sam Clark the Chief Executive will answer any questions.

Contact Sam on
Samatha.clark@LDEngland.org.uk
Or phone her on 07823536603



You can contact the office
E mail: info@LDEngland.org.uk
Phone: 0300 111 0444



#LDEngland
Stronger
Louder
Together!